

Schlumberger

VISION* Resistivity

12.25" Section

1:500m MDRT

Company:

Woodside Energy Ltd

Well:

Somerset-1

Field:

T34P

Rig Name:

Ocean Patriot

State:

Tasmania

Country:

Australia

Latitude: 39° 20' 36.76" S Northing: N 5,643,640.360m

Longitude: 142° 44' 56.14" E Easting: E 650,712.400m

Block: n.a

UWID: n.a

Rig Name: Ocean Patriot

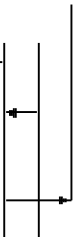
Rig Type: Semi-Submersible

FL: Otway Basin

FL1:

FL2:

Log Measured From - Drill Floor: 21.5 m
Reference Datum - Mean Sea Level
Permanent Datum - Least Astronomic Tide: 0.6 m



Ground Level: 503.0 m

Acquisition Dates: 24 Oct 09 to 02 Nov 09

Other Services:

Print Interval: 1275.0(m) to 2912.5(m)

PERFORM Drilling

Index Types:

Measured Depth

Directional Surveys

Index Scales:

1:500

Shock & Vibrations

Depth Source:

Driller's Depth

Annular Pressure & Temperature

Depth Sensor:

DES

Conveyance:

Drill Pipe

Print Type:

Final

Spud Date:

19-Oct-2009

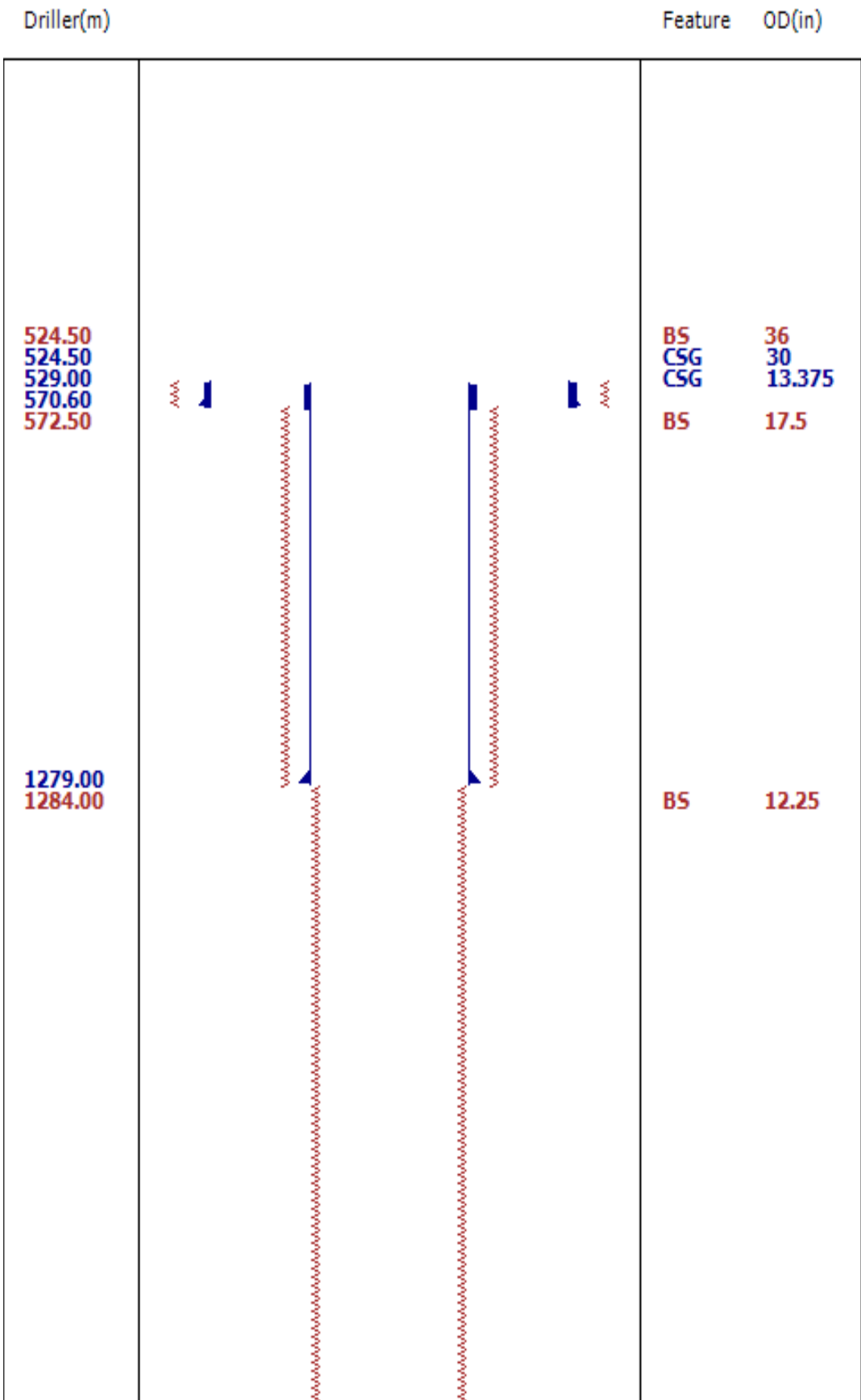
Disclaimer

THE USE OF AND RELIANCE UPON THIS RECORDED-DATA BY THE HEREIN NAMED COMPANY (AND ANY OF ITS AFFILIATES, PARTNERS, REPRESENTATIVES, AGENTS, CONSULTANTS AND EMPLOYEES) IS SUBJECT TO THE TERMS AND CONDITIONS AGREED UPON BETWEEN SCHLUMBERGER AND THE COMPANY, INCLUDING: (a) RESTRICTIONS ON USE OF THE RECORDED-DATA; (b) DISCLAIMERS AND WAIVERS OF WARRANTIES AND REPRESENTATIONS REGARDING COMPANY'S USE AND RELIANCE UPON THE RECORDED-DATA; AND (c) CUSTOMER'S FULL AND SOLE RESPONSIBILITY FOR ANY INFERENCE DRAWN OR DECISION MADE IN CONNECTION WITH THE USE OF THIS RECORDED-DATA.

Contents

- Header
- Disclaimer
- Contents
- Well Sketch
- Borehole Size/Casing Record
- Operational Run Summary
- Borehole Fluids
- Remarks and Equipment Summary
- Survey Record
- Run 2 VISION* Resistivity 1:500m MDRT
 - Software Version
 - Pass Summary
 - Log (VISION Resistivity RM - Woodside)
 - Parameter Listing
- Concise Calibration Record
- Tail

Well Sketch



2912.00

Borehole Size/Casing Record

| | | | | | | |
|-----------------------|--------|--------|-------|--|--|--|
| Bit | | | | | | |
| Bit Size (in) | 36 | 17.5 | 12.25 | | | |
| Bottom Driller (m) | 572.5 | 1284 | 2912 | | | |
| Casing | | | | | | |
| Size (in) | 30 | 13.375 | | | | |
| Weight (kg/m) | 169.64 | 71.92 | | | | |
| Inner Diameter (in) | 29.296 | 12.696 | | | | |
| Grade | H40 | N80 | | | | |
| Top Driller (m) | 524.5 | 529 | | | | |
| Bottom Driller (m) | 570.6 | 1279 | | | | |

Operational Run Summary

| | | | | | | |
|----------------------------------|------------------------|--|--|--|--|--|
| Parameter (unit) | Run 2 | | | | | |
| Date Log Started | 24-Oct-2009 | | | | | |
| Time Log Started | 13:36:13 | | | | | |
| Date Log Finished | 02-Nov-2009 | | | | | |
| Time Log Finished | 09:45:09 | | | | | |
| | | | | | | |
| Bit Size (in) | 12.250 | | | | | |
| Bit Start Depth (m) | 1274.72 | | | | | |
| Bit Stop Depth (m) | 2912.69 | | | | | |
| Top Log Interval (m) | 1279.00 | | | | | |
| Bottom Log Interval (m) | 2903.38 | | | | | |
| | | | | | | |
| Max Hole Deviation (deg) | 1.54 | | | | | |
| Azimuth of Max Deviation (deg) | 198.58 | | | | | |
| | | | | | | |
| Logging Unit Number | OLU-KC-0702 | | | | | |
| Logging Unit Location | | | | | | |
| Recorded By | Marganda/Mewan/Russell | | | | | |
| Witnessed By | David/Todd | | | | | |
| Service Order Number | 09ASQ0030 | | | | | |

Borehole Fluids

| | | | | | | |
|-----------------------------------|-------------|--|--|--|--|--|
| Parameter (unit) | Run 2 | | | | | |
| Type Fluid | Water | | | | | |
| Max Recorded Temperature (degC) | 109 | | | | | |
| Source of Sample | Active Tank | | | | | |
| Salinity (ppm) | Zoned | | | | | |
| Density (g/cm3) | Zoned | | | | | |

| | | | | | | |
|-----------------------------------|---------|--|--|--|--|--|
| Density (g/cm3) | Zoned | | | | | |
| Viscosity (s) | | | | | | |
| Fluid Loss (cm3) | | | | | | |
| pH | Zoned | | | | | |
| Source Rmf | | | | | | |
| Source Rmc | Pressed | | | | | |
| Rm @ Meas Temp (ohm.m@degC) | Zoned | | | | | |
| Rmf @ Meas Temp (ohm.m@degC) | Zoned | | | | | |
| Rmc @ Meas Temp (ohm.m@degC) | Zoned | | | | | |
| Rm @ BHT (ohm.m@degC) | Zoned | | | | | |
| Rmf @ BHT (ohm.m@degC) | Zoned | | | | | |
| Rmc @ BHT (ohm.m@degC) | Zoned | | | | | |

Zoned Borehole Fluids

Run 2

| Parameter | Value | Start |
|-----------------|-------------|-----------------------|
| Salinity | 70000 | 10/24/2009 1:36:13 PM |
| Salinity | 65000 | 10/25/2009 8:14:10 AM |
| Salinity | 52000 | 10/26/2009 4:24:53 AM |
| Salinity | 56000 | 10/27/2009 5:09:59 AM |
| Density | 1.29 | 10/24/2009 1:36:13 PM |
| Density | 1.26 | 10/26/2009 2:52:31 AM |
| Density | 1.3 | 10/27/2009 5:10:29 AM |
| pH | 8.5 | 10/24/2009 1:36:13 PM |
| pH | 10.2 | 10/25/2009 8:14:10 AM |
| pH | 10 | 10/26/2009 2:52:07 AM |
| pH | 9 | 10/26/2009 4:24:53 AM |
| Meas Temp | 19.4 | 10/24/2009 1:36:13 PM |
| Meas Temp | 18.8 | 10/26/2009 4:24:53 AM |
| Meas Temp | 20 | 10/27/2009 1:55:15 AM |
| Meas Temp | 19.4 | 10/24/2009 1:36:13 PM |
| Meas Temp | 18.9 | 10/26/2009 4:24:53 AM |
| Meas Temp | 19.7 | 10/27/2009 1:55:15 AM |
| Rm @ Meas Temp | 0.08 @ 19.4 | 10/24/2009 1:36:13 PM |
| Rm @ Meas Temp | 0.09 @ 18.8 | 10/26/2009 4:24:53 AM |
| Rm @ Meas Temp | 0.10 @ 20 | 10/27/2009 1:55:15 AM |
| Rmf @ Meas Temp | 0.06 @ 19.4 | 10/24/2009 1:36:13 PM |
| Rmf @ Meas Temp | 0.08 @ 18.9 | 10/26/2009 4:24:53 AM |
| Rmf @ Meas Temp | 0.08 @ 19.7 | 10/27/2009 1:55:15 AM |
| Rmc @ Meas Temp | 0.09 @ 20 | 10/24/2009 1:36:13 PM |
| Rmc @ Meas Temp | 0.14 @ 20 | 10/26/2009 4:24:53 AM |
| Rmc @ Meas Temp | 0.18 @ 20 | 10/27/2009 1:55:15 AM |
| Rm @ BHT | 0.04 @ 62 | 10/24/2009 1:36:13 PM |
| Rm @ BHT | 0.06 @ 62 | 10/26/2009 4:24:53 AM |
| Rm @ BHT | 0.10 @ 62 | 10/27/2009 1:52:45 AM |
| Rm @ BHT | 0.07 @ 62 | 10/27/2009 1:55:15 AM |
| Rmf @ BHT | 0.03 @ 62 | 10/24/2009 1:36:13 PM |
| Rmf @ BHT | 0.05 @ 62 | 10/26/2009 4:24:53 AM |
| Rmf @ BHT | 0.08 @ 62 | 10/27/2009 1:53:02 AM |
| Rmf @ BHT | 0.06 @ 62 | 10/27/2009 1:55:15 AM |

| | |
|-------------------------------|--|
| Remarks and Equipment Summary | |
|-------------------------------|--|

| Run 2: Toolstring | | Run 2: Remarks |
|--|--|----------------|
| <div><div><div>Cum. Length 39.36 SADN8:42709</div><div><div><div>sadrVISION825</div><div>— Neutron 35.49</div><div>— ROP 34.29</div><div>Density 33.51 UltraSonic 33.34</div><div>Cum. Length 30.51 Svr Sub::OSS0809</div><div><i>Saver Sub</i></div><div>Cum. Length 30.19 SONICVISIO:E1620</div><div><i>sonicVISION825</i></div><div>— Delta-T 27.56</div><div>— ROP 27.17</div></div></div></div></div> | | |



Cum. Length 23.31
Stabiliz:SBD8068

ILS

Cum. Length 22.33
TELE825:ZH-22

TeleScope825

— D&I 18.05

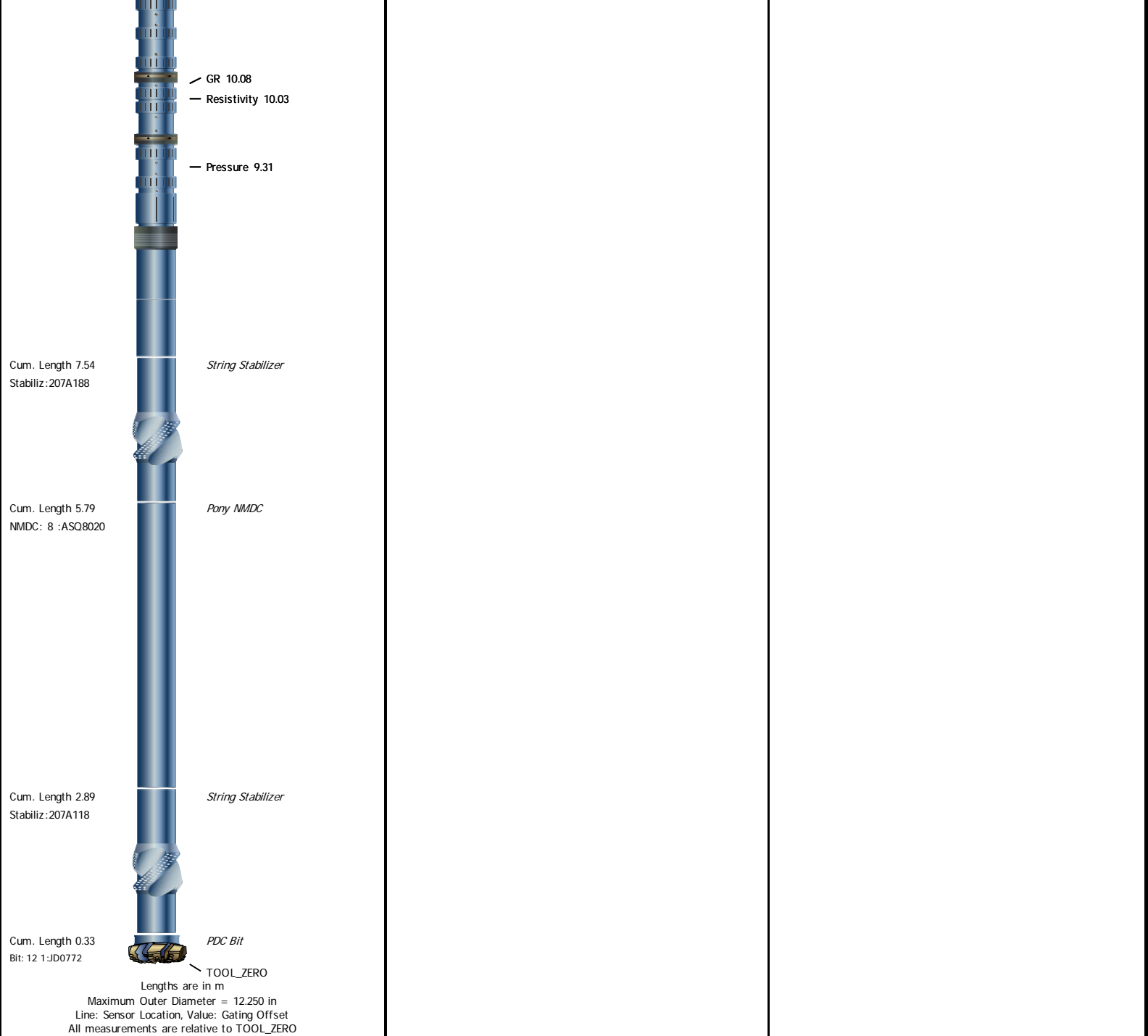
— Vibration 17.05

— ROP 15.70

Cum. Length 13.36
ARC8:2724

arcVISION825

— ROP 11.15



Survey Record

| | | | |
|--------------------|-----------------------------|----------------------------|---------------------------------|
| Survey Calculation | | | |
| Method : | Minimum Radius of Curvature | DLS Method : | Lubinski |
| North Reference : | Grid North | Total Correction Formula : | Magnetic Dec - Grid Convergence |
| Grid Convergence : | -1.11 deg | | |

| Rig Location | | | | | |
|----------------------|--|------------------|---------------------------|-------------------|----------|
| Latitude : | | 39° 20' 36.76" S | | Longitude : | |
| | | | | 142° 44' 56.14" E | |
| Tie In Point | | | | | |
| Measured Depth: | | 0.00 m | Inclination: | | 0.00 deg |
| | | | Azimuth: | | 0.00 deg |
| True Vertical Depth: | | 0.00 m | North Displacement: | | 0.00 m |
| | | | East Displacement: | | 0.00 m |
| N/-S VSec Origin: | | 0.00 m | E/-W VSec Origin: | | 0.00 m |
| | | | Vertical Section Azimuth: | | 0.00 deg |

| | | | |
|--|--------------------------|--------------------|--------------------------|
| D&I Inits Computed and Values Used - Run 2 | | | |
| Geomagnetic Model : | BGGM 2009 | Geomagnetic Date : | 24-Oct-2009 |
| Computed Location B : | 61074.62 nT +/- 300.00nT | Used Location B : | 61074.62 nT +/- 300.00nT |
| Computed Location G : | 999.45 mgn +/- 2.50mgn | Used Location G : | 999.45 mgn +/- 2.50mgn |

| | | | |
|-----------------------------|------------------------|-------------------------|------------------------|
| Computed Magnetic Dip : | -70.38 deg +/- 0.45deg | Used Magnetic Dip : | -70.38 deg +/- 0.45deg |
| Computed Magnetic Dec : | 11.03 deg | Used Magnetic Dec : | 11.03 deg |
| Computed Total Correction : | 12.14 deg | Used Total Correction : | 12.14 deg |

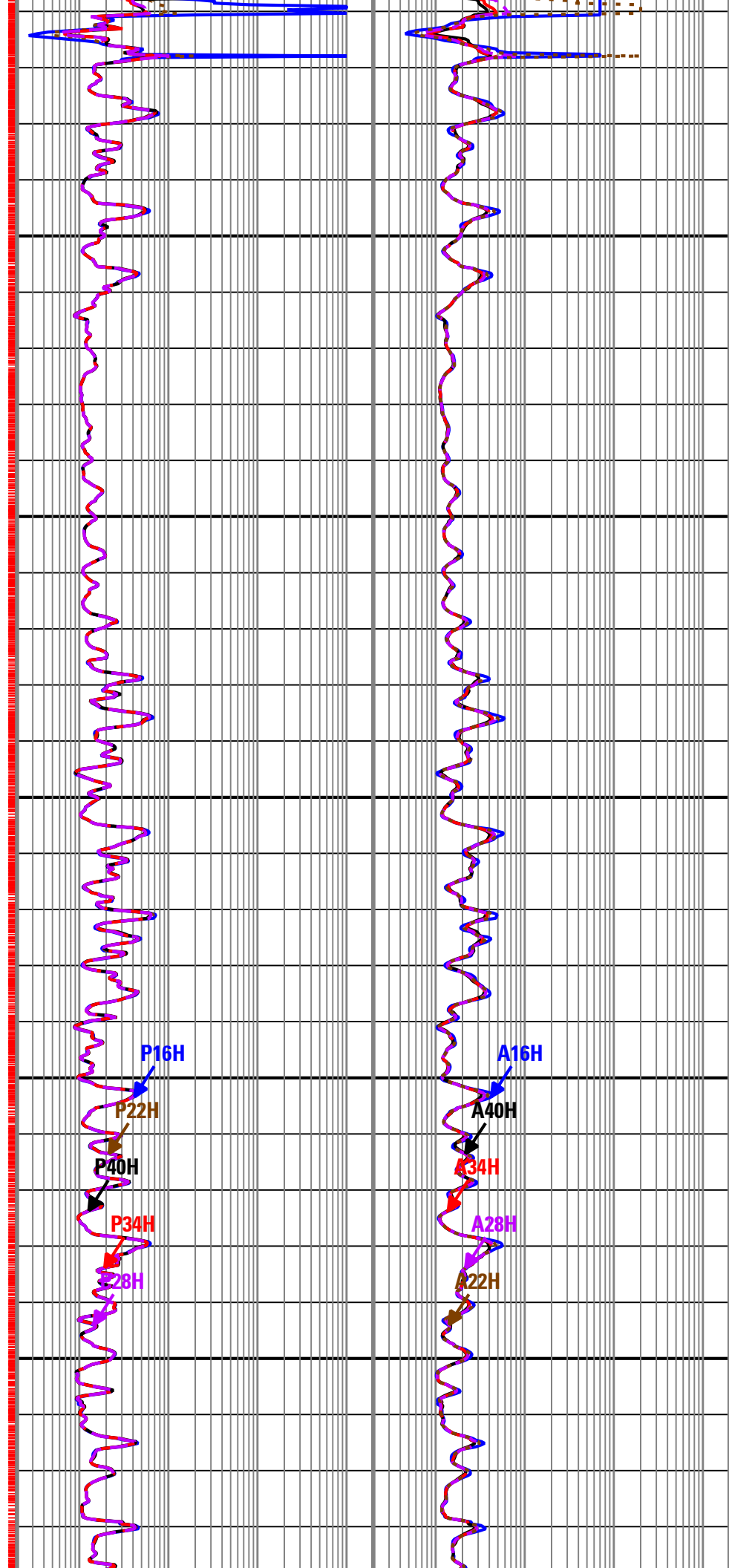
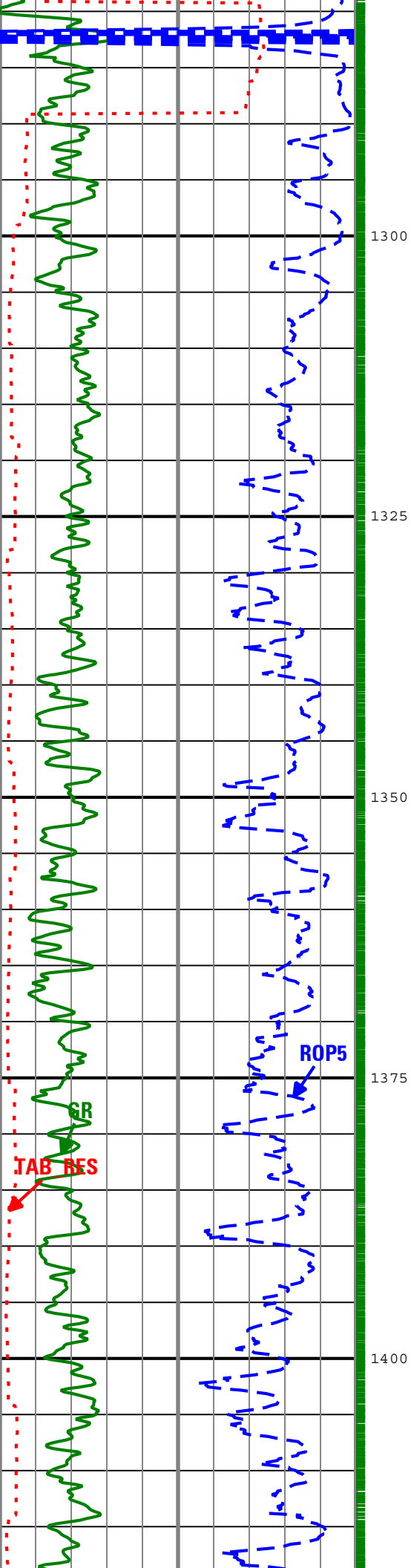
Survey Quality Index
10 : DMAG-Corrected

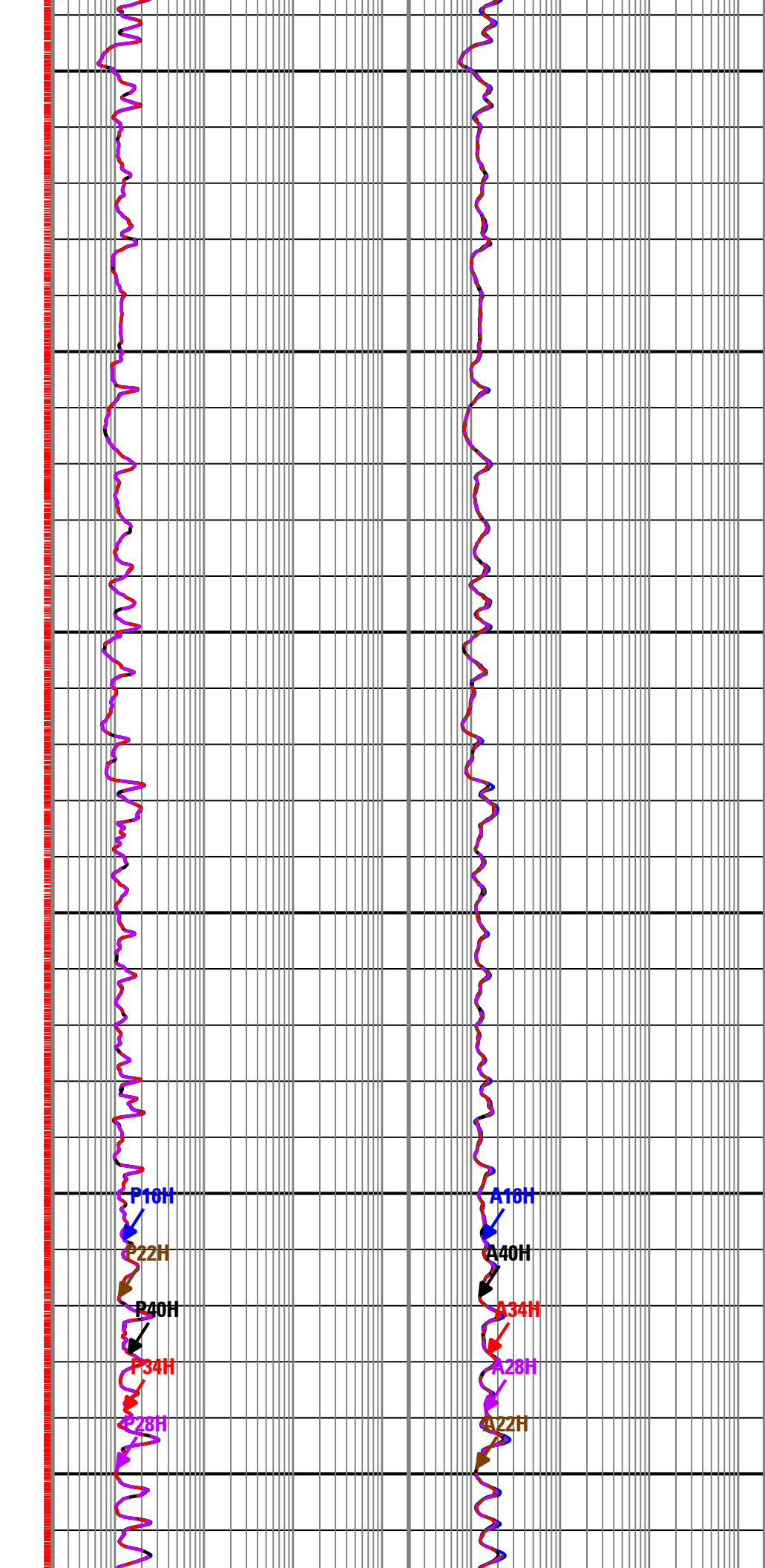
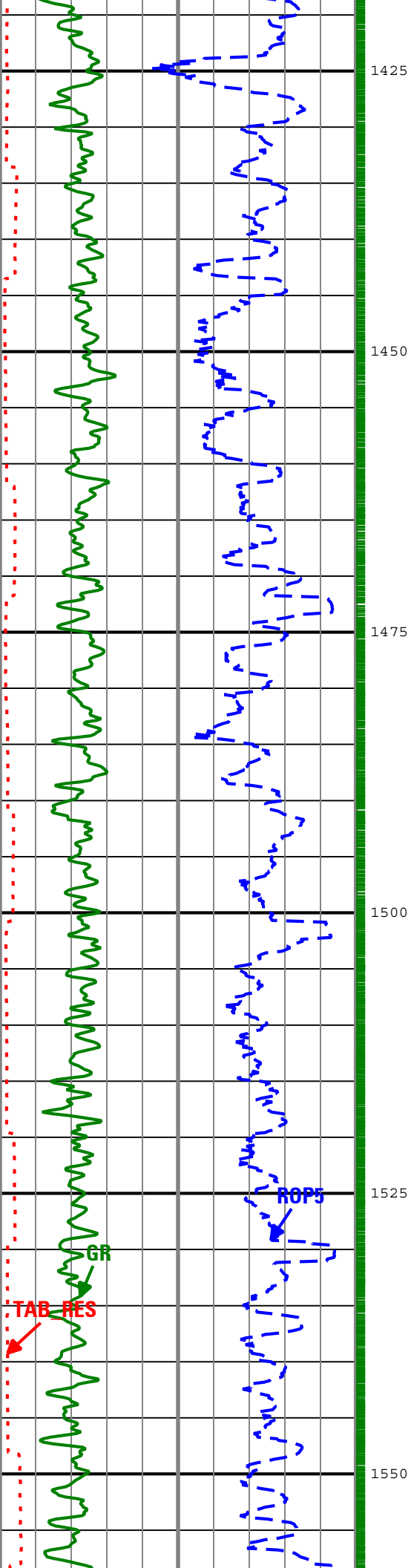
| Seq | MD (m) | Incl (deg) | Azim (deg) | Course (m) | TVD (m) | V Sec (m) | N/ -S (m) | E/ -W (m) | Closure (m) | at Azi (deg) | DLS deg/30m | Tool Type | QI | CI |
|-----|-----------|---------------|---------------|---------------|------------|--------------|--------------|--------------|----------------|-----------------|----------------|-----------|----|----|
| 1 | 0.00 | 0.00 | 0.00 | 0.00 | 0.00 | 0.00 | 0.00 | 0.00 | 0.00 | 90.00 | 0.00 | TIP | | |
| 2 | 524.50 | 0.00 | 0.00 | 524.50 | 524.50 | 0.00 | 0.00 | 0.00 | 0.00 | 90.00 | 0.00 | Manual | 10 | |
| 3 | 599.08 | 0.58 | 120.59 | 74.58 | 599.08 | -0.19 | -0.19 | 0.32 | 0.38 | 120.59 | 0.23 | Manual | 10 | |
| 4 | 684.35 | 0.43 | 120.90 | 85.27 | 684.35 | -0.58 | -0.58 | 0.97 | 1.13 | 120.68 | 0.05 | Manual | 10 | |
| 5 | 713.04 | 0.53 | 133.63 | 28.69 | 713.03 | -0.72 | -0.72 | 1.16 | 1.37 | 121.94 | 0.15 | Manual | 10 | |
| 6 | 972.34 | 0.91 | 95.08 | 259.30 | 972.31 | -1.73 | -1.73 | 4.08 | 4.43 | 113.02 | 0.07 | Manual | 10 | |
| 7 | 1001.37 | 0.91 | 84.18 | 29.03 | 1001.34 | -1.73 | -1.73 | 4.54 | 4.86 | 110.87 | 0.18 | Manual | 10 | |
| 8 | 1059.78 | 0.95 | 75.47 | 58.41 | 1059.74 | -1.56 | -1.56 | 5.47 | 5.69 | 105.94 | 0.08 | Manual | 10 | |
| 9 | 1090.08 | 0.78 | 51.04 | 30.30 | 1090.04 | -1.37 | -1.37 | 5.87 | 6.03 | 103.12 | 0.40 | Manual | 10 | |
| 10 | 1117.31 | 0.70 | 46.36 | 27.23 | 1117.27 | -1.14 | -1.14 | 6.14 | 6.24 | 100.50 | 0.11 | Manual | 10 | |
| 11 | 1203.66 | 0.94 | 59.46 | 86.35 | 1203.61 | -0.41 | -0.41 | 7.13 | 7.14 | 93.32 | 0.11 | Manual | 10 | |
| 12 | 1251.88 | 0.96 | 60.07 | 48.22 | 1251.82 | -0.01 | -0.01 | 7.82 | 7.82 | 90.08 | 0.01 | Manual | 10 | |
| 13 | 1395.50 | 0.46 | 85.91 | 143.62 | 1395.43 | 0.63 | 0.63 | 9.44 | 9.46 | 86.18 | 0.12 | Manual | 10 | |
| 14 | 1423.48 | 0.37 | 96.26 | 27.98 | 1423.41 | 0.63 | 0.63 | 9.64 | 9.66 | 86.27 | 0.13 | Manual | 10 | |
| 15 | 1450.69 | 0.34 | 103.29 | 27.21 | 1450.62 | 0.60 | 0.60 | 9.80 | 9.82 | 86.49 | 0.06 | Manual | 10 | |
| 16 | 1739.63 | 0.23 | 147.23 | 288.94 | 1739.56 | -0.08 | -0.08 | 10.95 | 10.95 | 90.44 | 0.02 | Manual | 10 | |
| 17 | 1885.00 | 0.40 | 189.10 | 145.37 | 1884.92 | -0.83 | -0.83 | 11.03 | 11.06 | 94.31 | 0.06 | Manual | 10 | |
| 18 | 2029.52 | 0.77 | 194.71 | 144.52 | 2029.44 | -2.27 | -2.27 | 10.70 | 10.94 | 101.96 | 0.08 | Manual | 10 | |
| 19 | 2086.65 | 0.83 | 198.58 | 57.13 | 2086.56 | -3.03 | -3.03 | 10.47 | 10.90 | 106.14 | 0.04 | Manual | 10 | |
| 20 | 2201.88 | 0.95 | 193.38 | 115.23 | 2201.78 | -4.75 | -4.75 | 9.99 | 11.06 | 115.44 | 0.04 | Manual | 10 | |
| 21 | 2288.48 | 0.98 | 181.58 | 86.60 | 2288.37 | -6.19 | -6.19 | 9.80 | 11.59 | 122.28 | 0.07 | Manual | 10 | |
| 22 | 2316.76 | 1.03 | 184.29 | 28.28 | 2316.64 | -6.69 | -6.69 | 9.77 | 11.84 | 124.37 | 0.07 | Manual | 10 | |
| 23 | 2345.02 | 1.10 | 185.02 | 28.26 | 2344.90 | -7.21 | -7.21 | 9.73 | 12.11 | 126.53 | 0.08 | Manual | 10 | |
| 24 | 2374.64 | 1.28 | 185.91 | 29.62 | 2374.51 | -7.82 | -7.82 | 9.67 | 12.44 | 128.96 | 0.18 | Manual | 10 | |
| 25 | 2403.54 | 1.36 | 187.90 | 28.90 | 2403.40 | -8.48 | -8.48 | 9.59 | 12.80 | 131.48 | 0.10 | Manual | 10 | |
| 26 | 2518.96 | 1.54 | 189.36 | 115.42 | 2518.78 | -11.37 | -11.37 | 9.15 | 14.60 | 141.17 | 0.05 | Manual | 10 | |
| 27 | 2546.16 | 1.43 | 188.77 | 27.20 | 2545.98 | -12.07 | -12.07 | 9.04 | 15.08 | 143.15 | 0.12 | Manual | 10 | |
| 28 | 2604.71 | 1.38 | 184.64 | 58.55 | 2604.51 | -13.49 | -13.49 | 8.87 | 16.15 | 146.67 | 0.06 | Manual | 10 | |
| 29 | 2661.70 | 1.39 | 181.51 | 56.99 | 2661.48 | -14.87 | -14.87 | 8.80 | 17.27 | 149.38 | 0.04 | Manual | 10 | |
| 30 | 2691.87 | 1.33 | 180.69 | 30.17 | 2691.64 | -15.58 | -15.58 | 8.78 | 17.89 | 150.58 | 0.06 | Manual | 10 | |
| 31 | 2719.22 | 1.31 | 179.24 | 27.35 | 2718.99 | -16.21 | -16.21 | 8.79 | 18.44 | 151.55 | 0.04 | Manual | 10 | |
| 32 | 2748.22 | 1.24 | 175.26 | 29.00 | 2747.98 | -16.86 | -16.86 | 8.82 | 19.02 | 152.39 | 0.12 | Manual | 10 | |
| 33 | 2776.91 | 1.12 | 171.85 | 28.69 | 2776.66 | -17.44 | -17.44 | 8.88 | 19.57 | 153.02 | 0.15 | Manual | 10 | |
| 34 | 2806.83 | 1.09 | 179.52 | 29.92 | 2806.58 | -18.02 | -18.02 | 8.92 | 20.11 | 153.65 | 0.15 | Manual | 10 | |
| 35 | 2834.17 | 1.10 | 172.01 | 27.34 | 2833.91 | -18.54 | -18.54 | 8.96 | 20.59 | 154.19 | 0.16 | Manual | 10 | |
| 36 | 2863.33 | 1.17 | 161.51 | 29.16 | 2863.07 | -19.10 | -19.10 | 9.10 | 21.15 | 154.53 | 0.23 | Manual | 10 | |

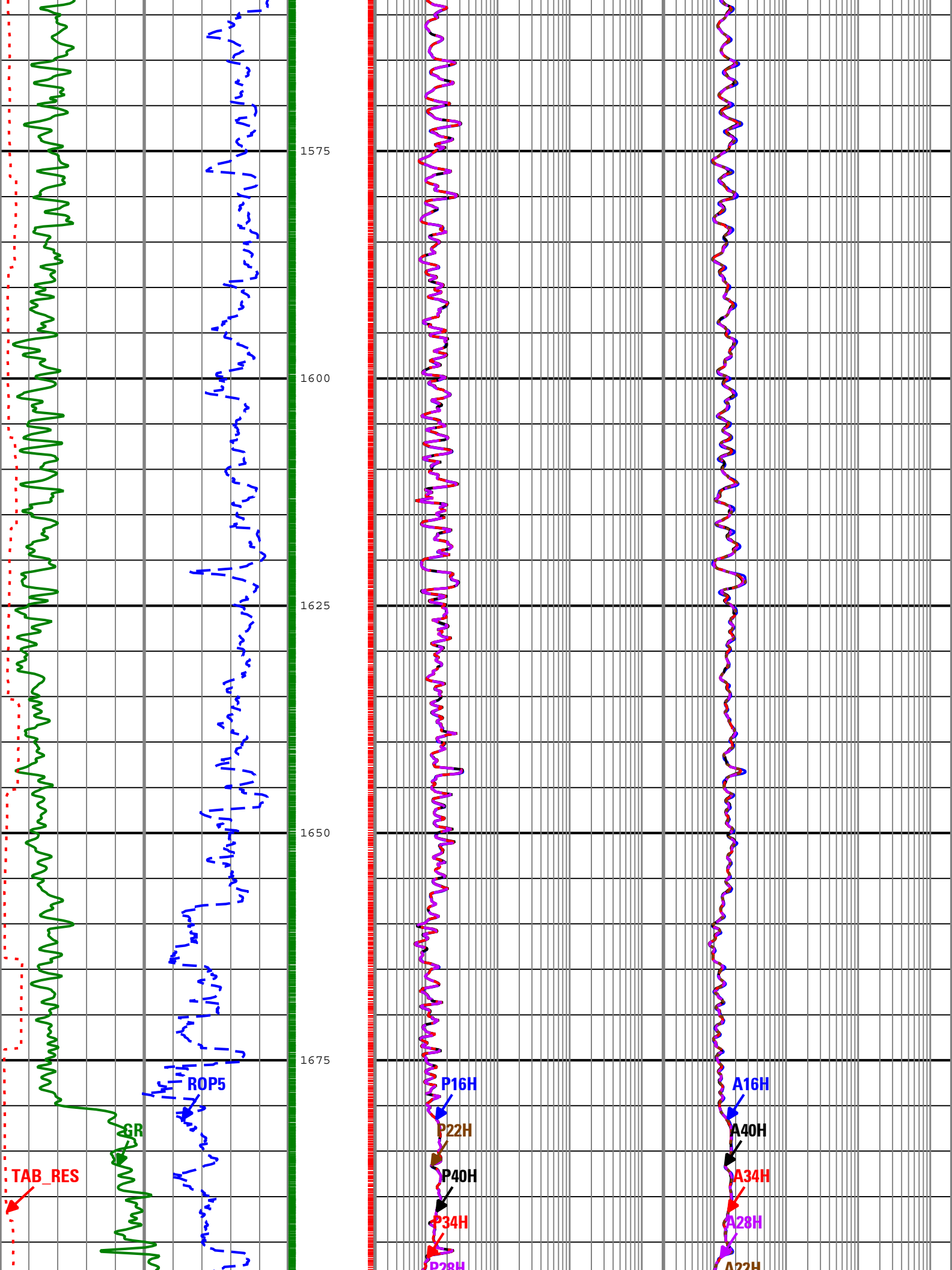
Run 2

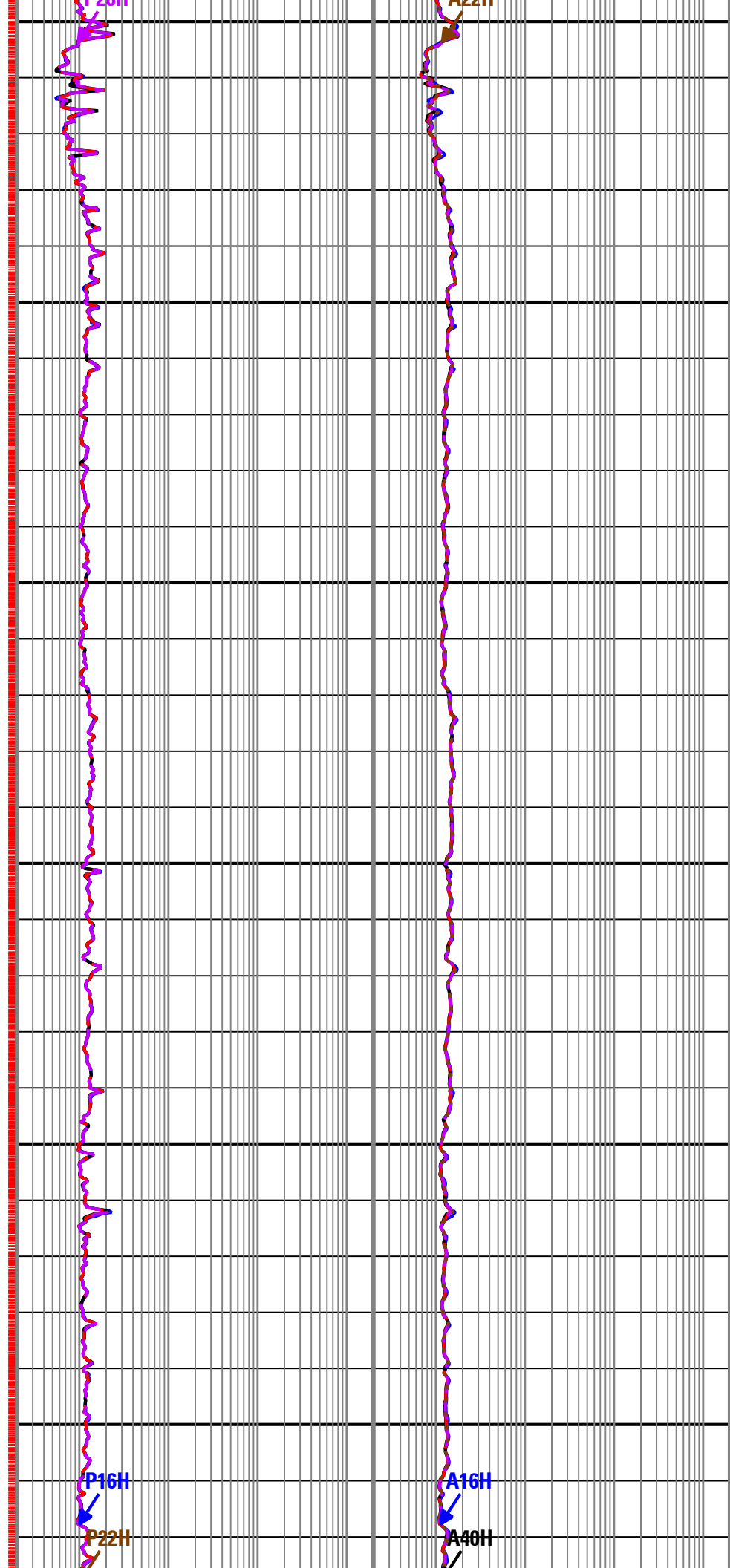
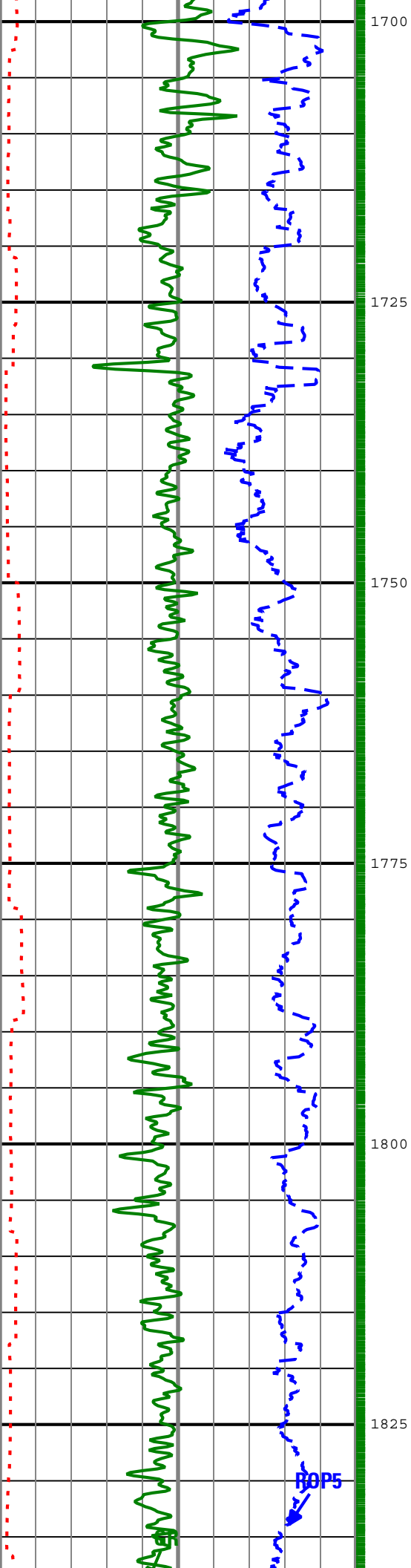
VISION* Resistivity 1:500m MDRT

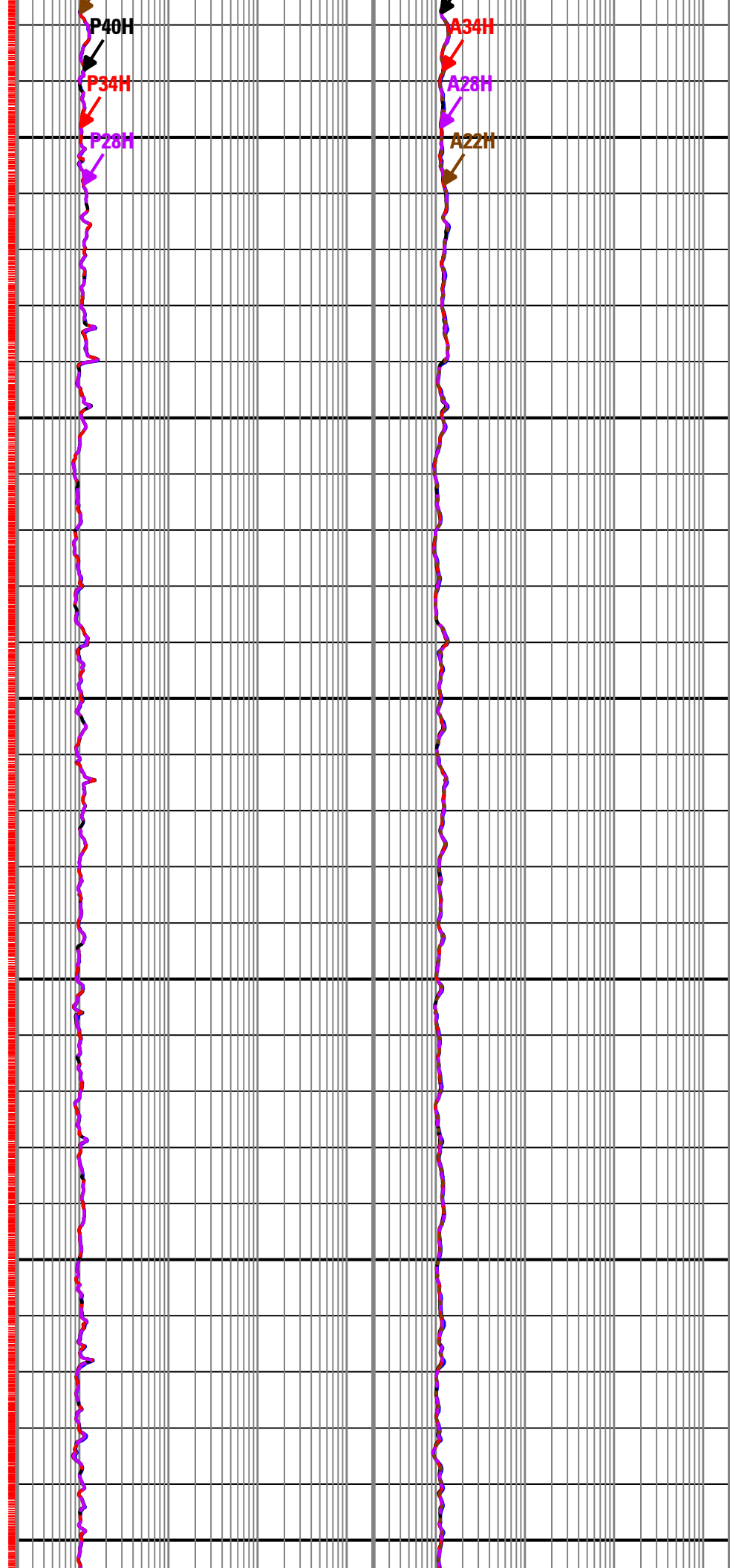
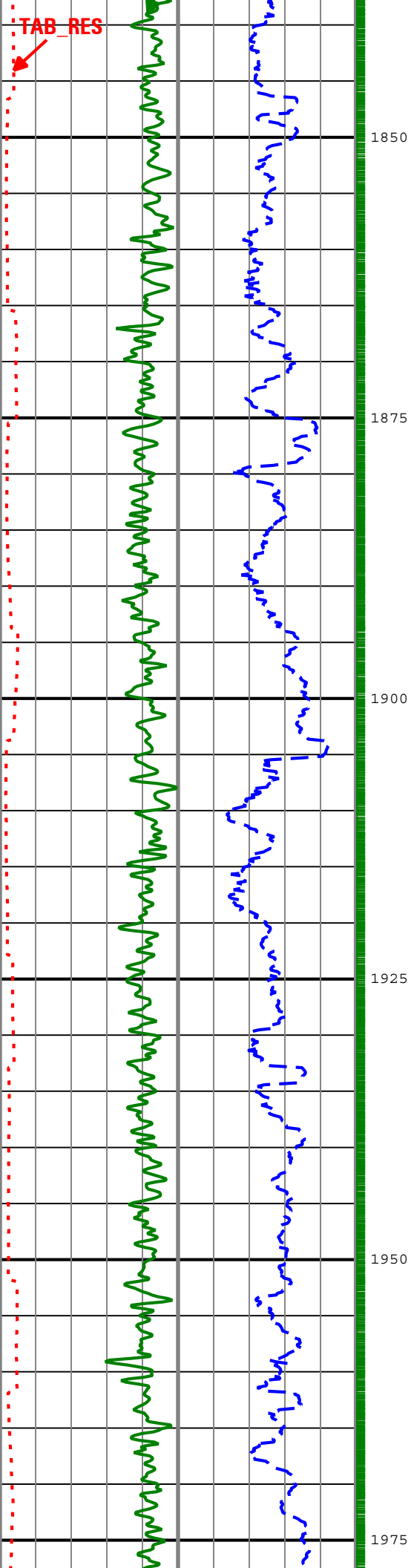
| Software Version | |
|--------------------|--------------------------------|
| Acquisition System | Version |
| MaxWell | 1.2.8706.0 |
| Framework Patch | FWK-BGC-20090918-1.2.8706.1030 |
| Application Patch | APL-BGC-DnM-1.2.8706.1021 |

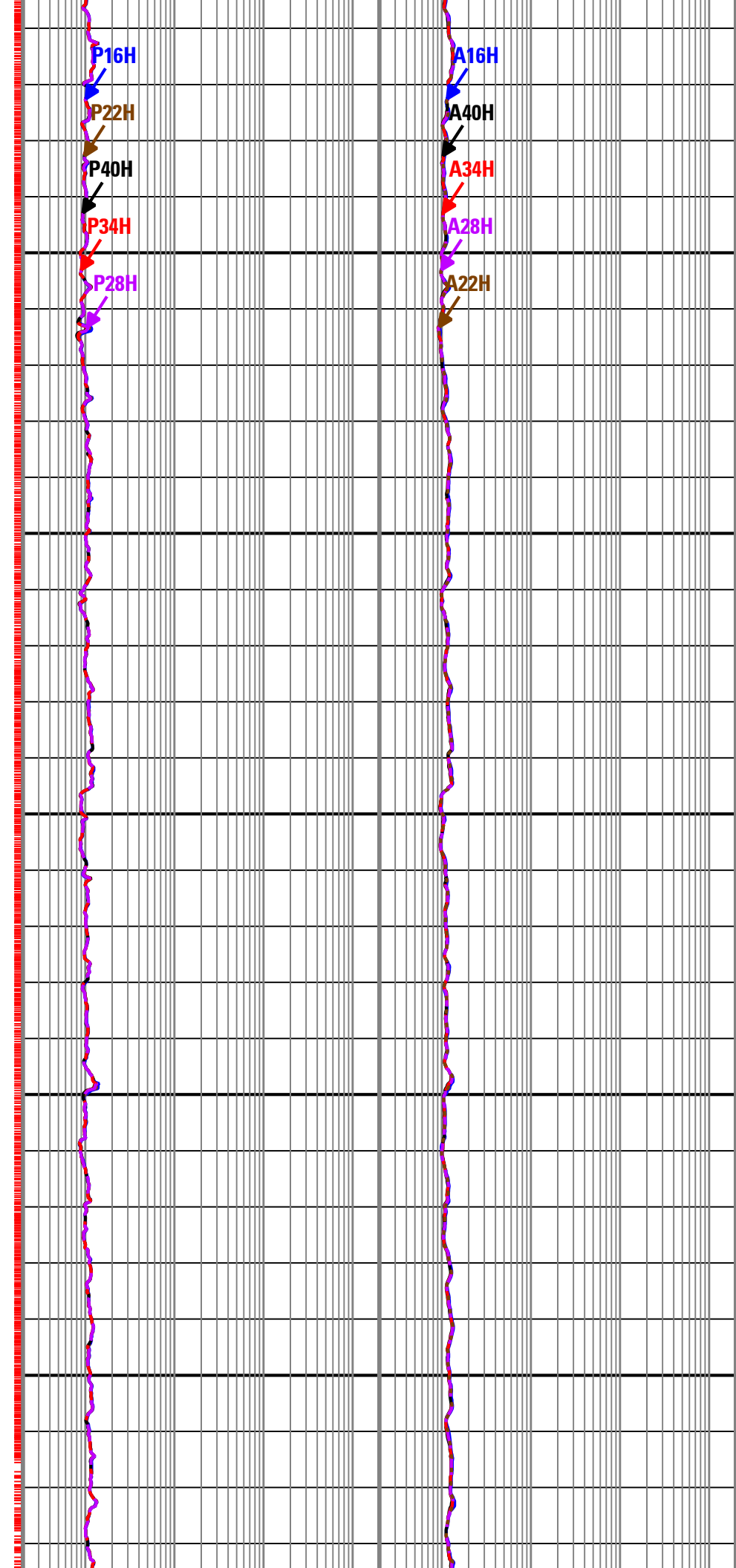
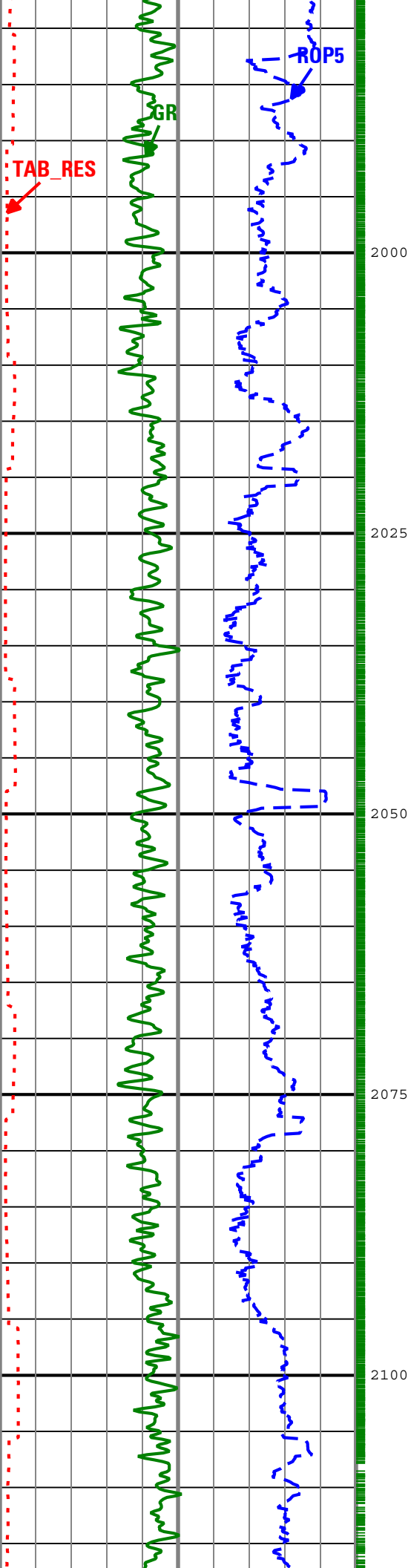


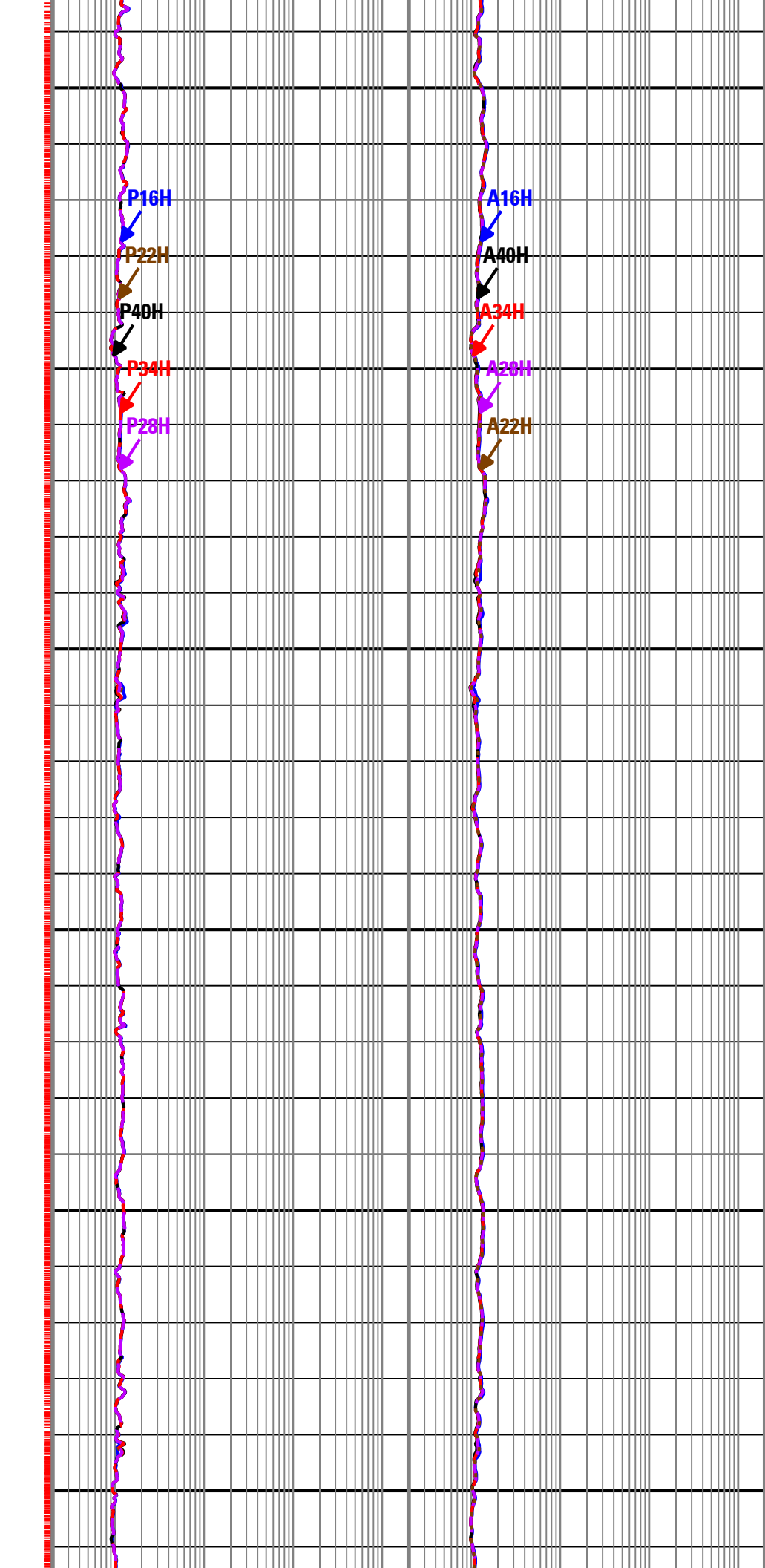
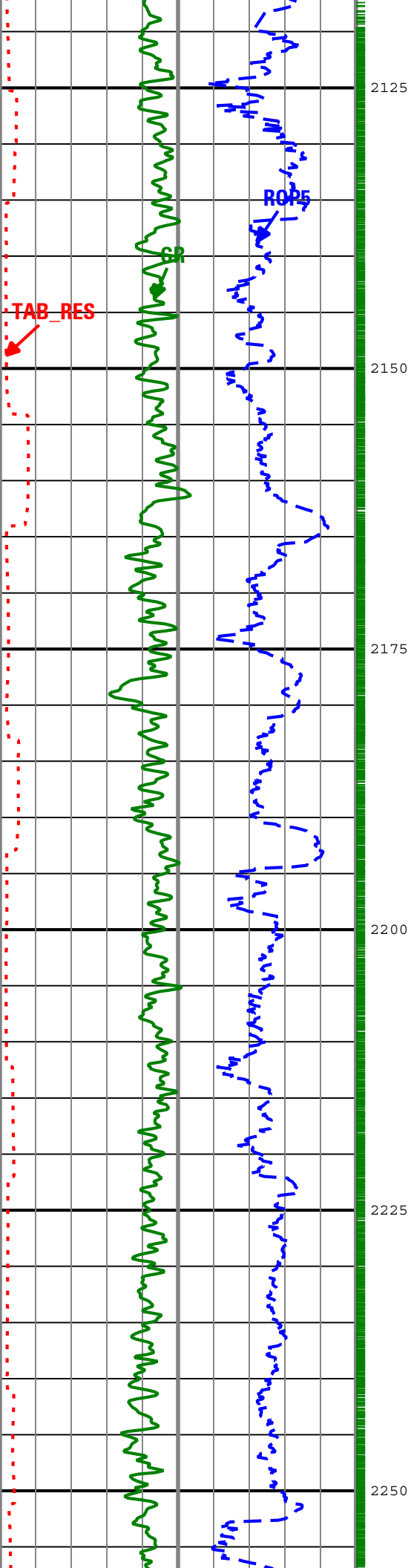


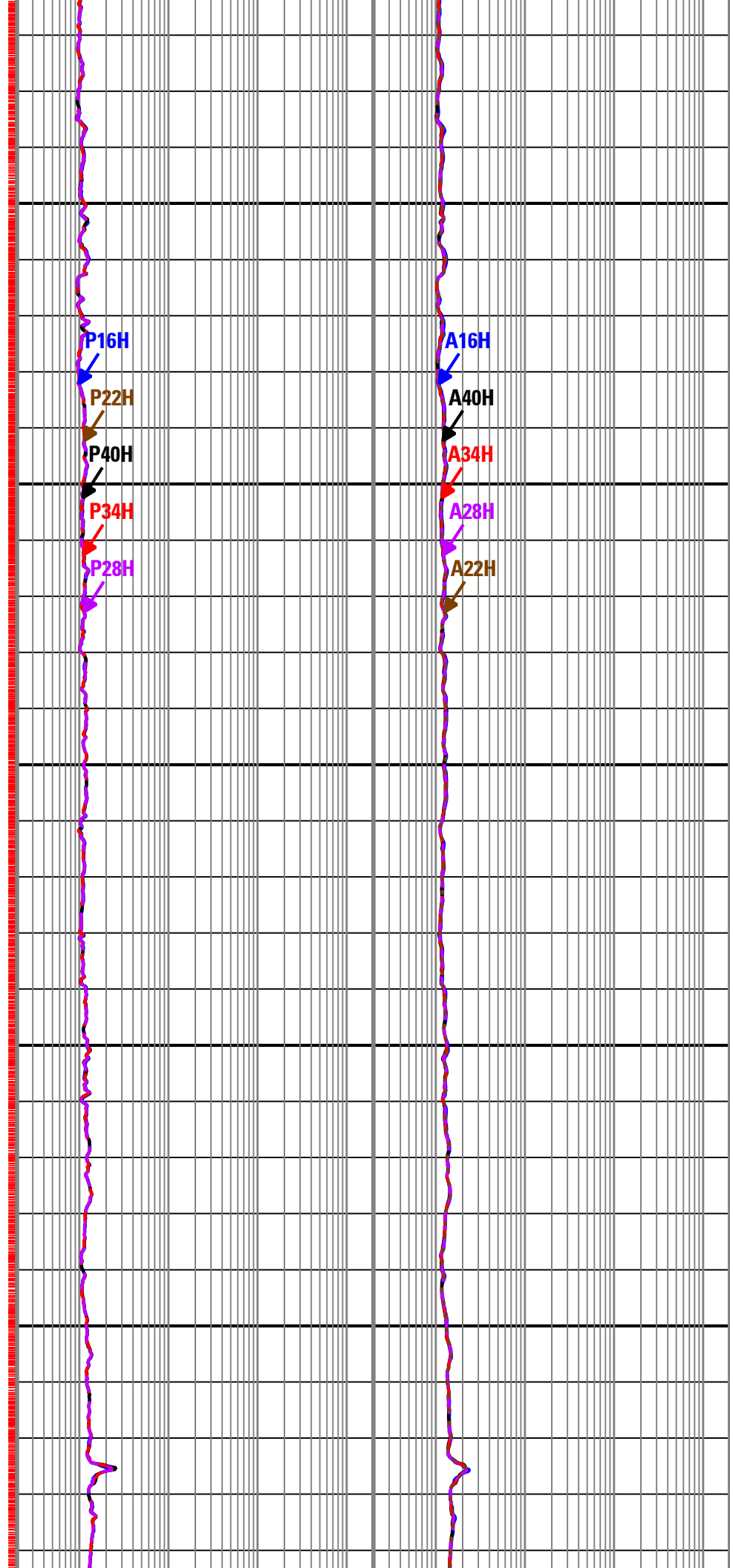
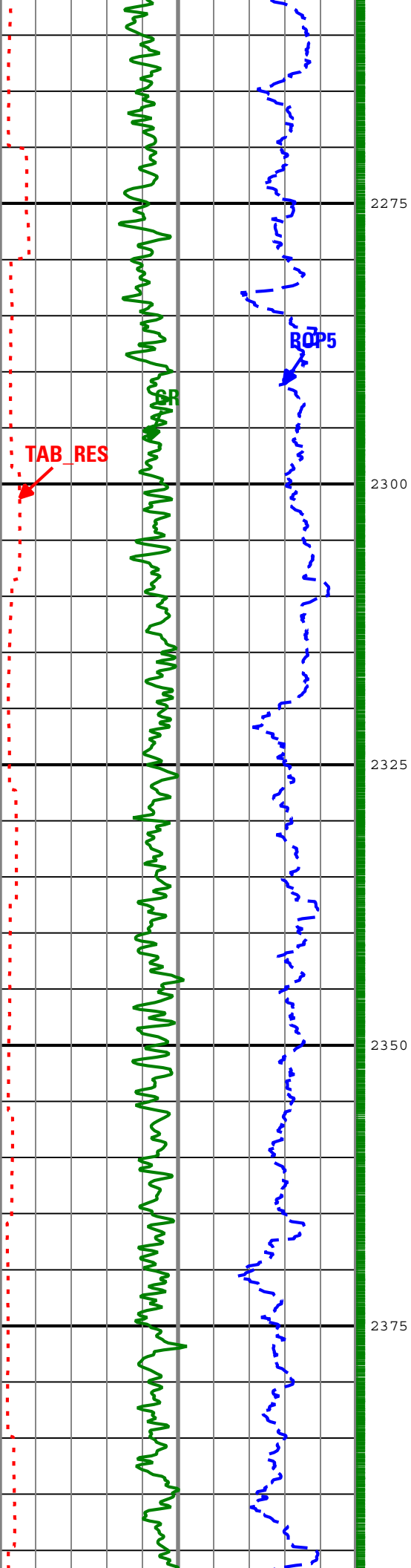


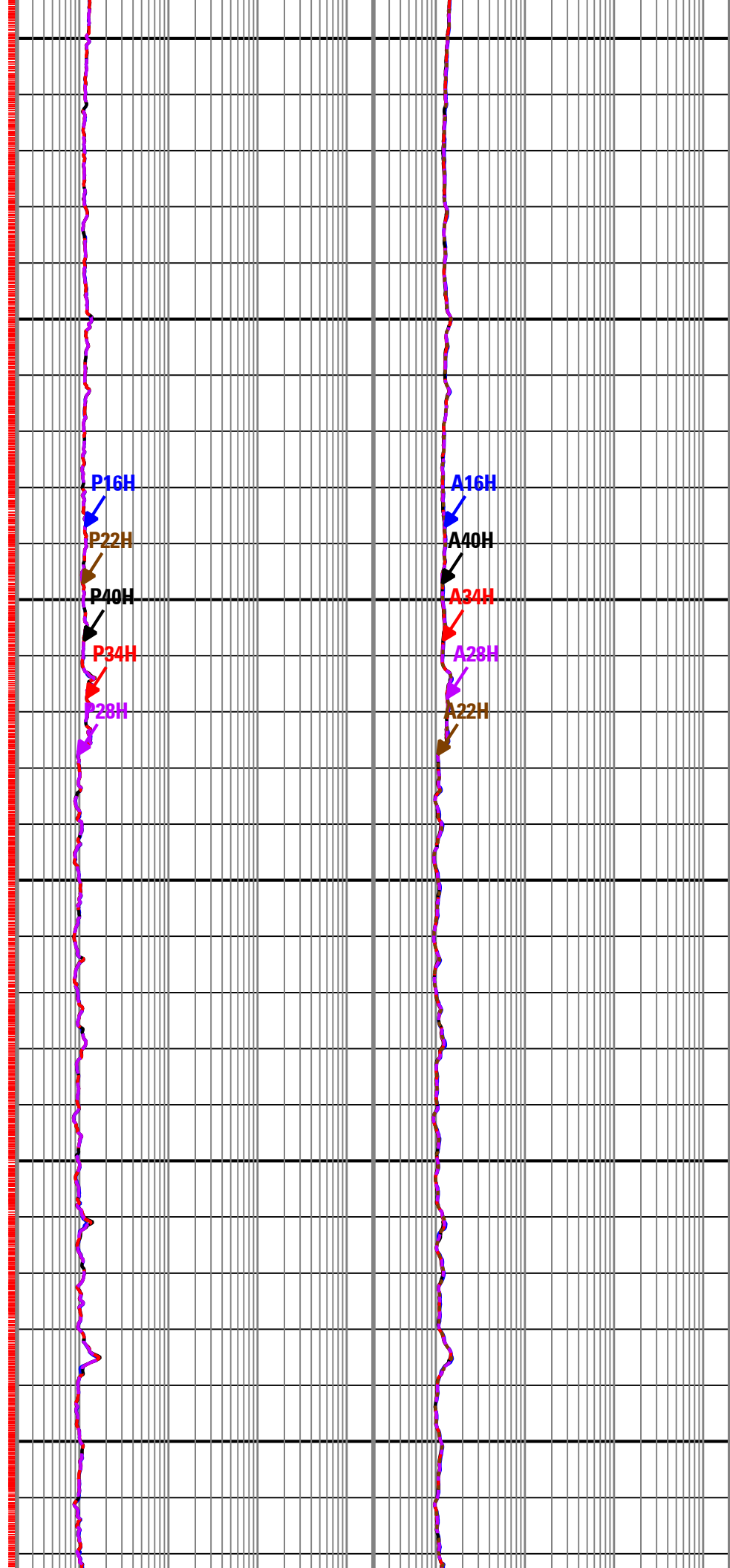
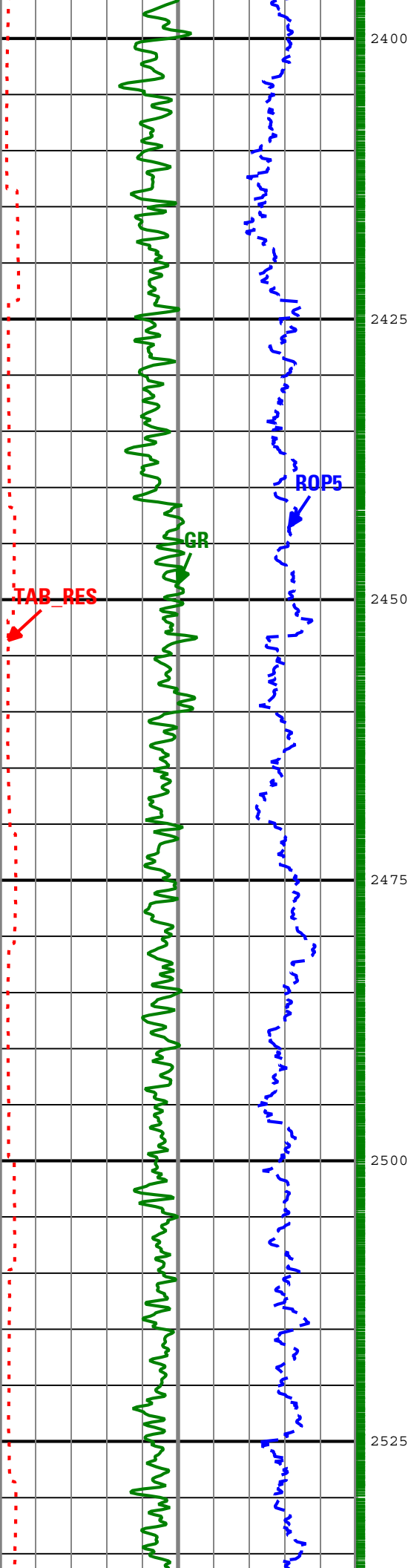


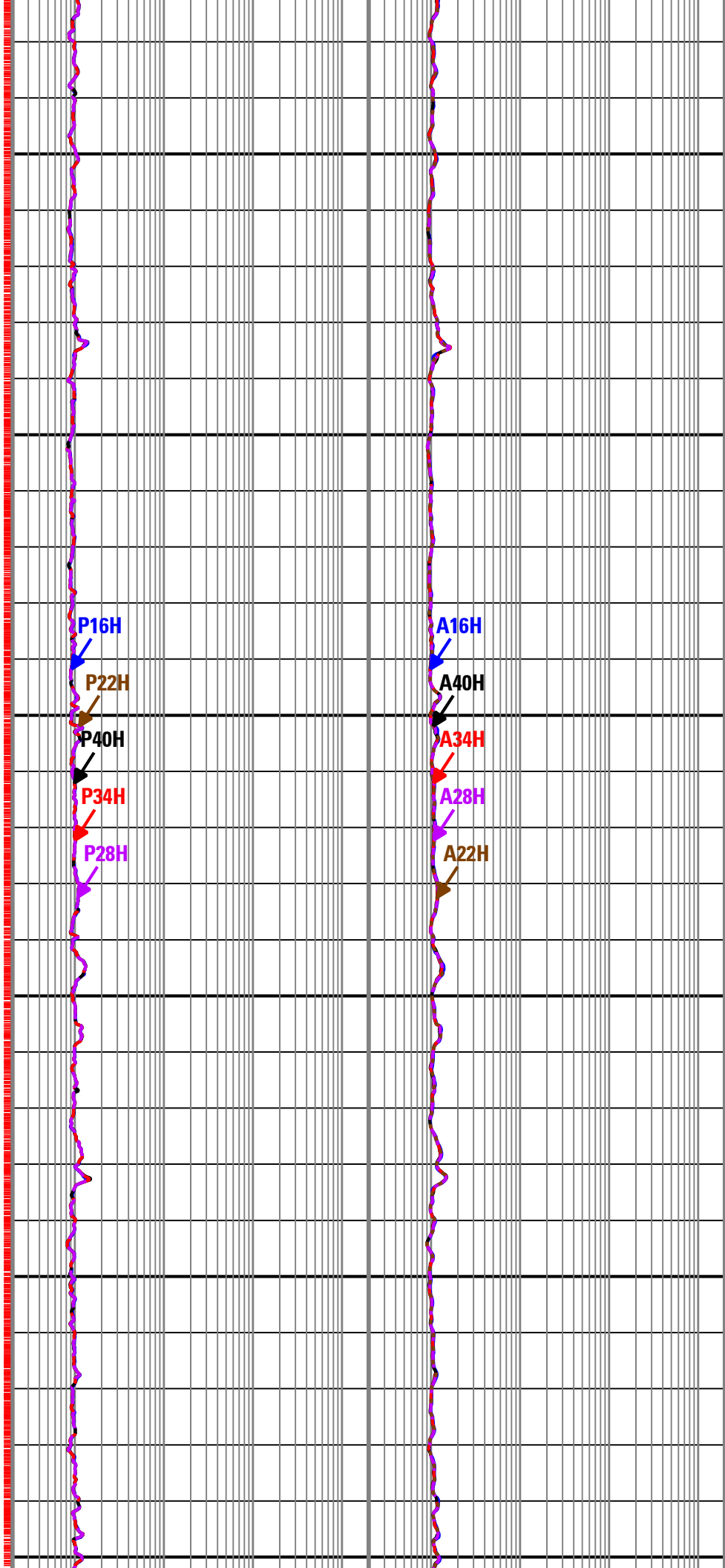
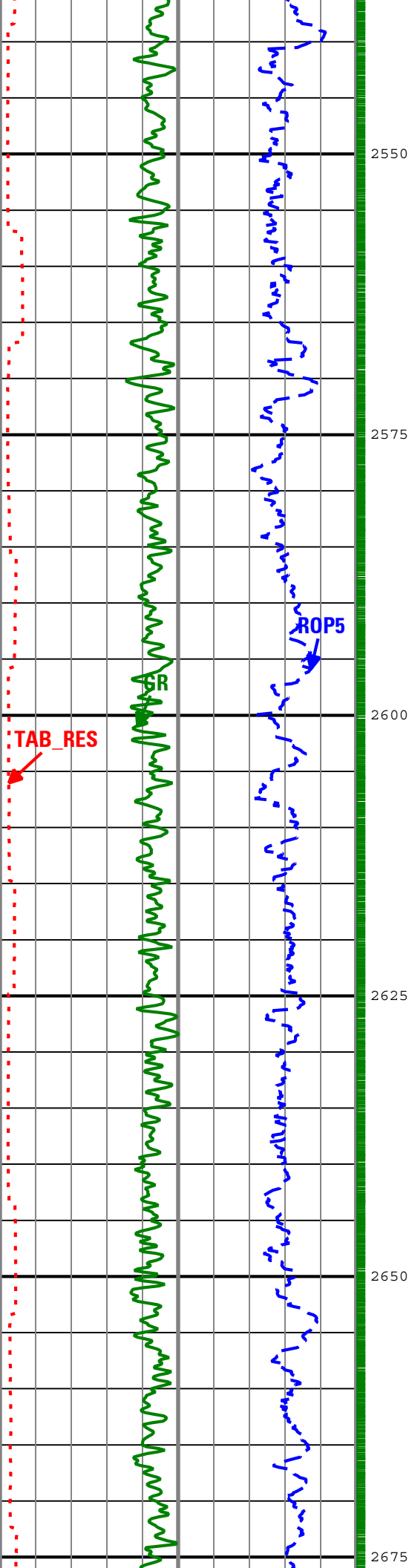


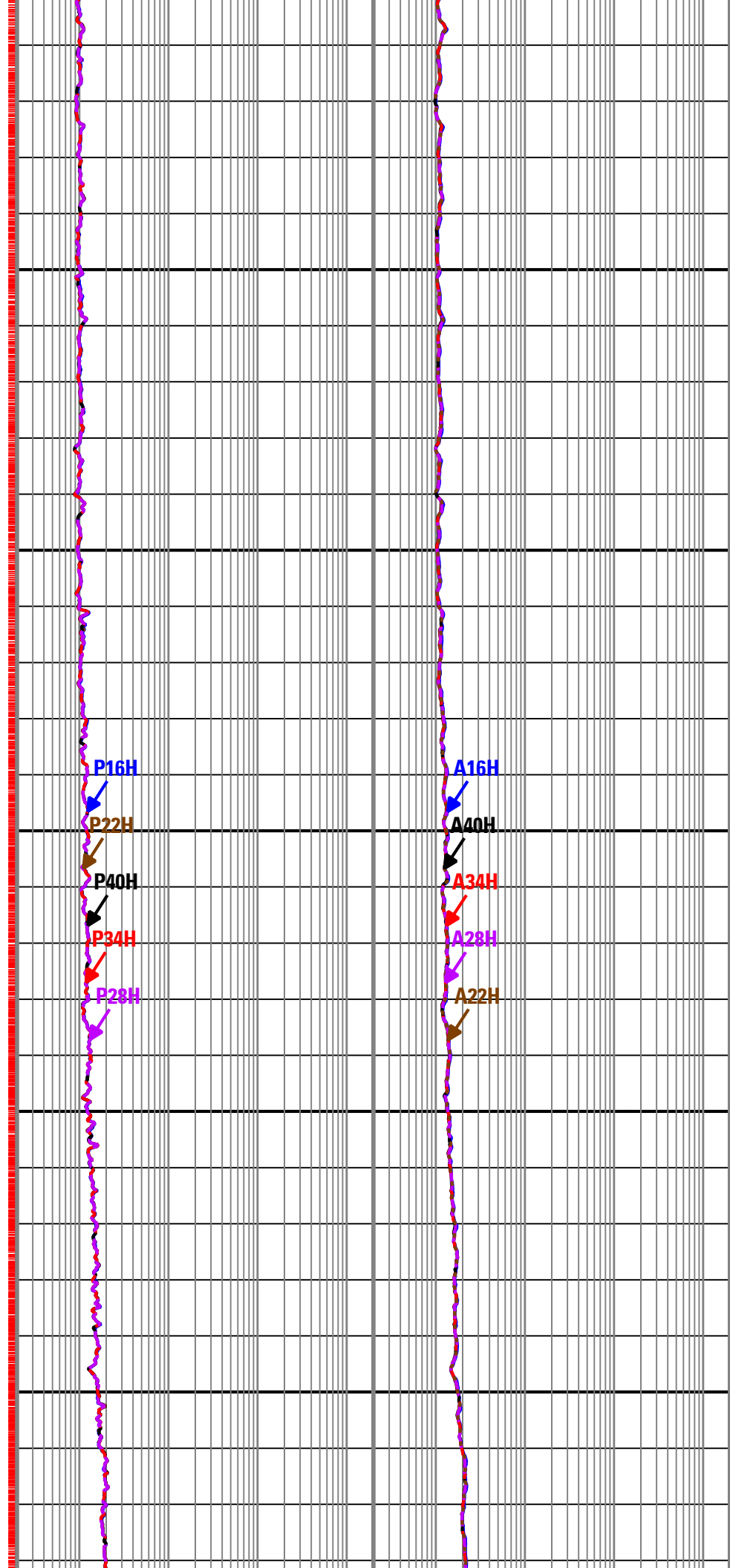
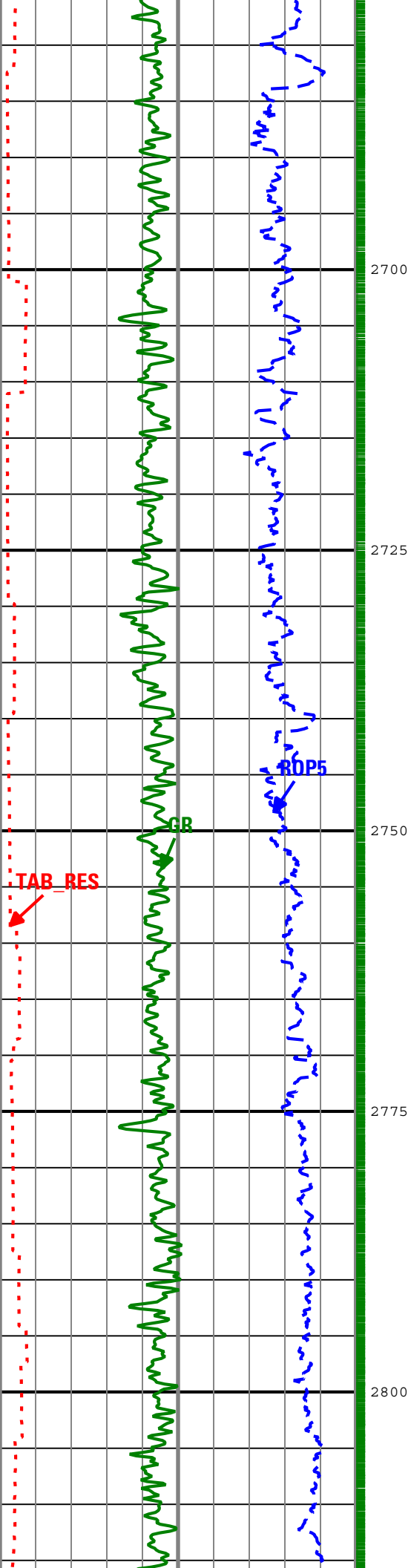


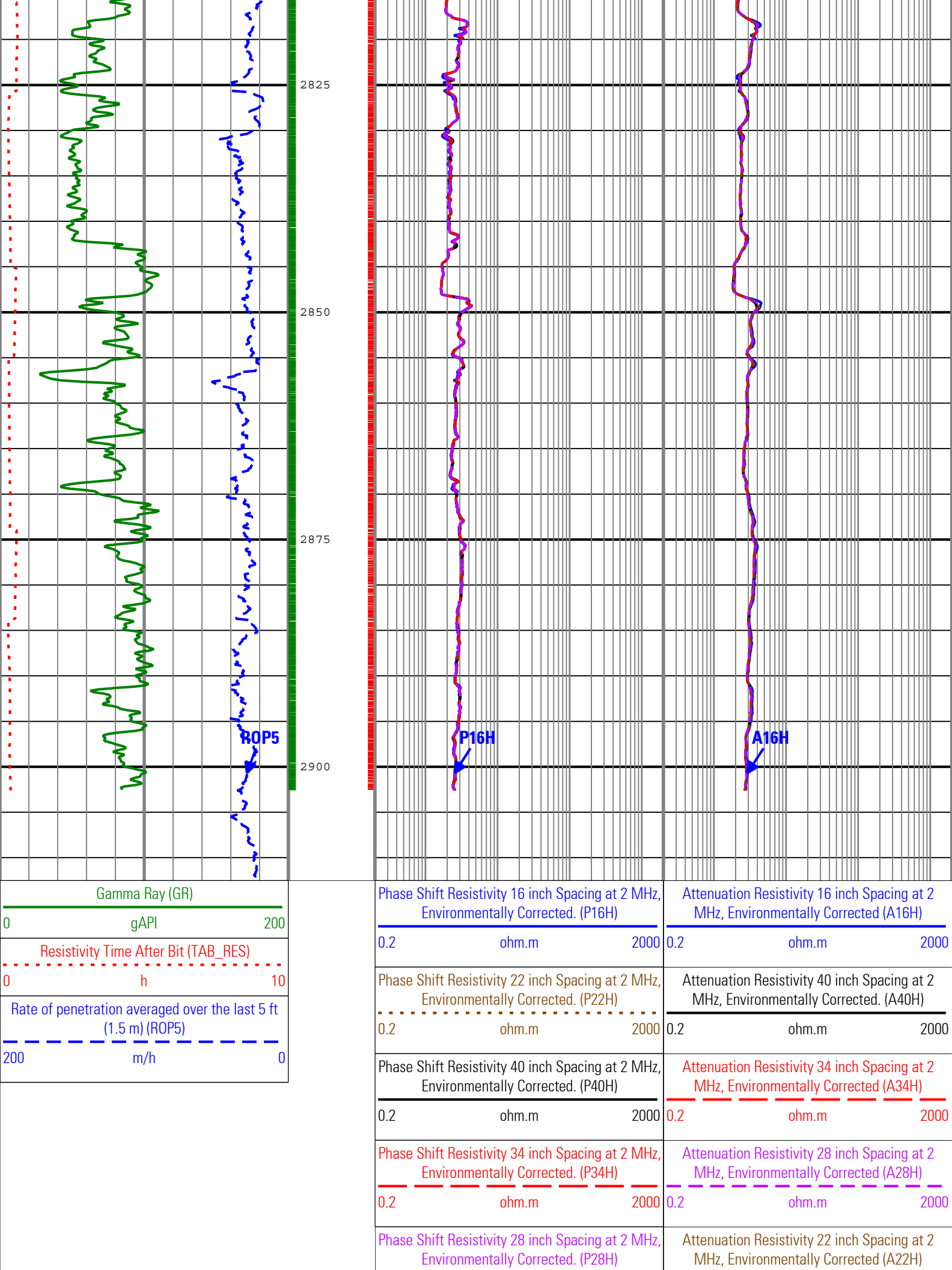












| Channel Processing Parameters | | | | |
|-------------------------------|--|----------------|-----------------------|------------|
| Parameter | Description | ToolPath | Value | Unit |
| BHK | Drilling Fluid Potassium Concentration | Borehole | Time Zoned | % |
| BHT | Bottom Hole Temperature | Borehole | 62 | degC |
| BS | Bit Size | COMPLETION | Depth Zoned | in |
| DFD | Drilling Fluid Density | Borehole | Time Zoned | g/cm3 |
| DFT | Drilling Fluid Type | Borehole | Water | |
| GGRD | Geothermal Gradient | Borehole | 1.1 | degF/100ft |
| GRSE | Generalized Mud Resistivity Selection | Borehole | Computed (GEN-9) | |
| GTSE | Generalized Temperature Selection | Borehole | Gradient From Surface | |
| MST | Mud Sample Temperature | Borehole | Time Zoned | degC |
| RMS | Resistivity of Mud Sample | Borehole | Time Zoned | ohm.m |
| SHT | Surface Hole Temperature | Borehole | 10 | degC |
| TD | Total Measured Depth | Borehole | 2912 | m |
| TEMP_SEL_ARC | ARC Temperature Selection | ARC8:ARC8:ARDC | Annular | |

| Depth Zone Parameters | | | |
|-----------------------|-------|-------------|------------|
| Parameter | Value | Start (m) | Stop (m) |
| BS | 17.5 | 1275 | 1284 |
| BS | 12.25 | 1284 | 2912.52 |
| All depth are actual. | | | |

| Time Zone Parameters | | | | | |
|-----------------------------|-------|----------------------|----------------------|-------------------|------------------|
| Parameter | Value | Start Time | Stop Time | Start Depth (m) | Stop Depth (m) |
| BHK | 5.77 | 24-Oct-2009 19:34:49 | 25-Oct-2009 08:14:10 | 1274.72 | 1278.41 |
| BHK | 5.77 | 25-Oct-2009 08:14:10 | 27-Oct-2009 05:09:59 | 1278.41 | 2451.68 |
| BHK | 4.52 | 27-Oct-2009 05:09:59 | 02-Nov-2009 09:45:08 | 2451.68 | 2912.69 |
| DFD | 1.29 | 24-Oct-2009 19:34:49 | 26-Oct-2009 02:52:31 | 1274.72 | 1626.54 |
| DFD | 1.26 | 26-Oct-2009 02:52:31 | 27-Oct-2009 05:10:29 | 1626.54 | 2451.68 |
| DFD | 1.3 | 27-Oct-2009 05:10:29 | 02-Nov-2009 09:45:08 | 2451.68 | 2912.69 |
| MST | 19.4 | 24-Oct-2009 19:34:49 | 26-Oct-2009 04:24:53 | 1274.72 | 1673.78 |
| MST | 18.8 | 26-Oct-2009 04:24:53 | 27-Oct-2009 01:55:15 | 1673.78 | 2342.67 |
| MST | 20 | 27-Oct-2009 01:55:15 | 02-Nov-2009 09:45:08 | 2342.67 | 2912.69 |
| RMS | 0.08 | 24-Oct-2009 19:34:49 | 26-Oct-2009 04:24:53 | 1274.72 | 1673.78 |
| RMS | 0.09 | 26-Oct-2009 04:24:53 | 27-Oct-2009 01:55:15 | 1673.78 | 2342.67 |
| RMS | 0.1 | 27-Oct-2009 01:55:15 | 02-Nov-2009 09:45:08 | 2342.67 | 2912.69 |
| All depth are at tool zero. | | | | | |

| Tool Control Parameters | | | | |
|-------------------------|--|-------------|------------|------|
| Parameter | Description | ToolPath | Value | Unit |
| OFFBTM_TH | Threshold for deciding whether the bit is off bottom | DnMWorkflow | Time Zoned | m |


| Time Zone Parameters | | | | | |
|----------------------|-------|----------------------|----------------------|-------------------|------------------|
| Parameter | Value | Start Time | Stop Time | Start Depth (m) | Stop Depth (m) |
| OFFBTM_TH | 0.0 | 24-Oct-2009 19:34:49 | 27-Oct-2009 09:45:08 | 1274.72 | 1599.52 |

| | | | | | |
|-----------|-----|----------------------|----------------------|---------|---------|
| OFFBTM_TH | 0.6 | 24-Oct-2009 19:34:49 | 25-Oct-2009 23:15:02 | 1274.72 | 1529.56 |
| OFFBTM_TH | 0.5 | 25-Oct-2009 23:15:02 | 26-Oct-2009 00:11:46 | 1529.56 | 1558.04 |
| OFFBTM_TH | 0.4 | 26-Oct-2009 00:11:46 | 26-Oct-2009 18:26:10 | 1558.04 | 2126.79 |
| OFFBTM_TH | 0.5 | 26-Oct-2009 18:26:10 | 26-Oct-2009 18:26:39 | 2126.79 | 2127.1 |
| OFFBTM_TH | 0.6 | 26-Oct-2009 18:26:39 | 26-Oct-2009 18:36:19 | 2127.1 | 2132.63 |
| OFFBTM_TH | 0.4 | 26-Oct-2009 18:36:19 | 02-Nov-2009 09:45:08 | 2132.63 | 2912.69 |


All depth are at tool zero.

Concise Calibration Record

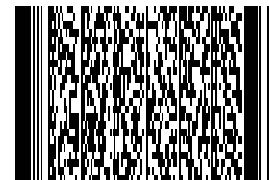
Run 2: ARC8 : Calibration Resistivity

| Primary Set Components | Description | Tool Element | Serial Number |
|--|---------------------------------|--------------|---------------|
| | DC without AIM | ARDC | 2724 |
| Calibration Dates | Shop Calibration | | |
| Date & Time / Date Validity | 05-Oct-2009 02:19:44 PM - Valid | | |
| Calibration Source | Time Frame File | | |
| Calibration Type: Resistivity: Air | | | |
| Description | Min/Nominal/Max | Shop | Unit |
|  All Resistivity: Air Measurements within Tolerance | | | |

Run 2: ARC8 : Calibration Gamma Ray

| Primary Set Components | Description | Tool Element | Serial Number |
|--|---------------------------------|--------------|---------------|
| | DC without AIM | ARDC | 2724 |
| Calibration Dates | Shop Calibration | | |
| Date & Time / Date Validity | 05-Oct-2009 09:57:16 AM - Valid | | |
| Calibration Source | Time Frame File | | |
| Calibration Type: Gamma Ray: Blanket | | | |
| Description | Min/Nominal/Max | Shop | Unit |
|  All Gamma Ray: Blanket Measurements within Tolerance | | | |

| | |
|-----------|---------------------|
| Company: | Woodside Energy Ltd |
| Well: | Somerset-1 |
| Field: | T34P |
| Rig Name: | Ocean Patriot |
| State: | Tasmania |
| Country: | Australia |





VISION* Resistivity

12.25" Section

1:500m MDRT